

CNX i3000

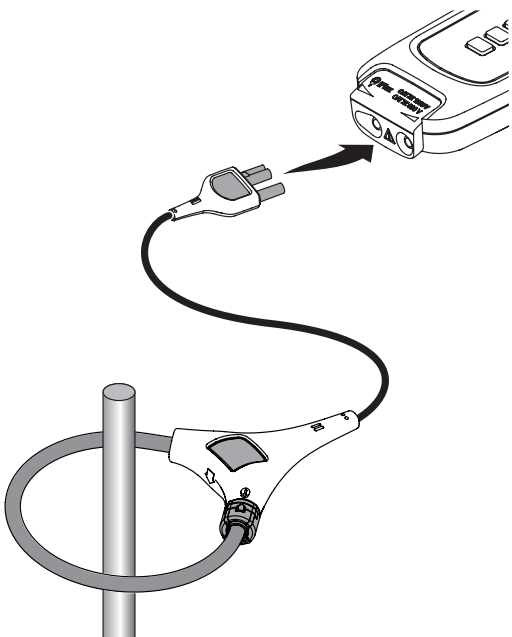
Wireless iFlex

Quick Reference Guide

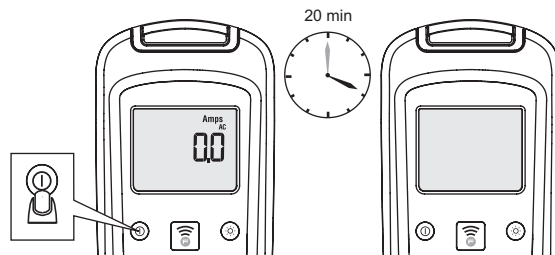
⚠️ Warning

To prevent possible electrical shock, fire, or personal injury, read the "CNX i3000 Safety Information" before you use this Product.

Go to www.fluke.com to register your product and find more information.

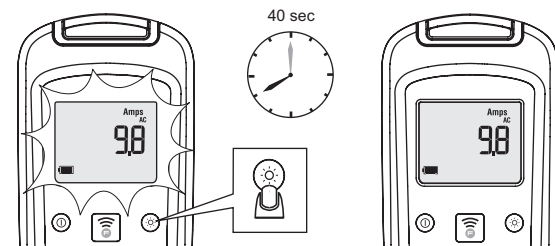


①



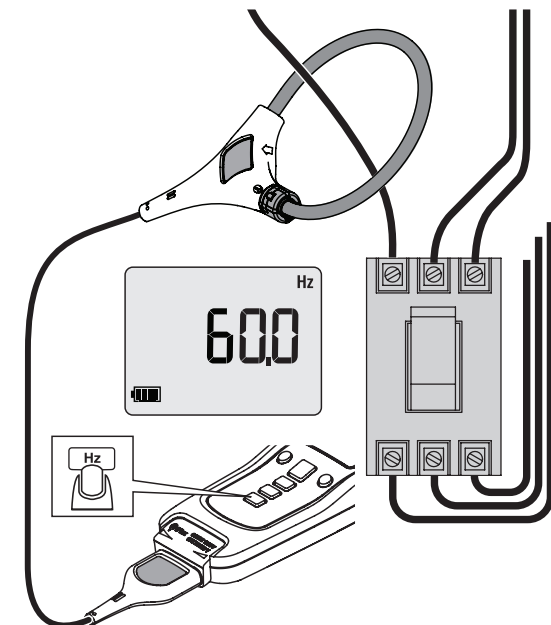
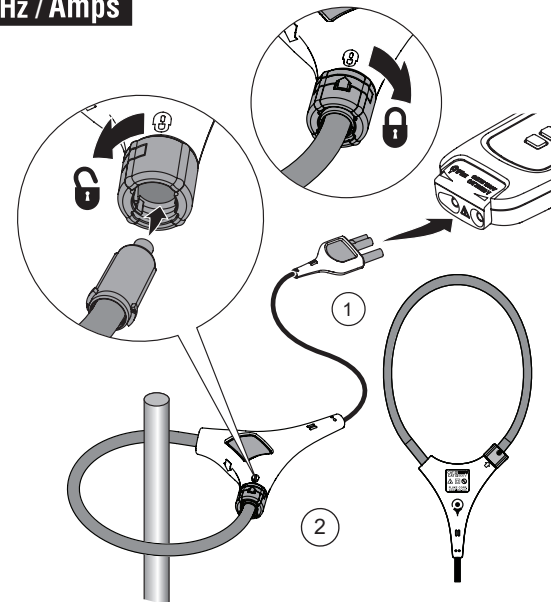
1 OFF	2 LOG + ①	3 LOG x2	4 PoFF
5 ⊙	6 Amps _{AC} 9.8 ∞	7 ⊙	8 Amps _{AC} 9.8 ∞

⊙

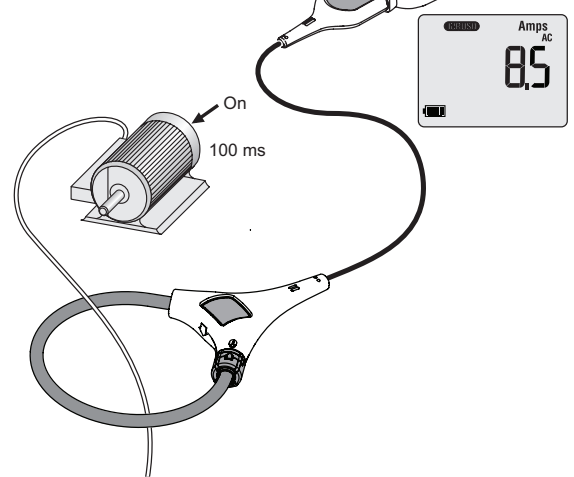
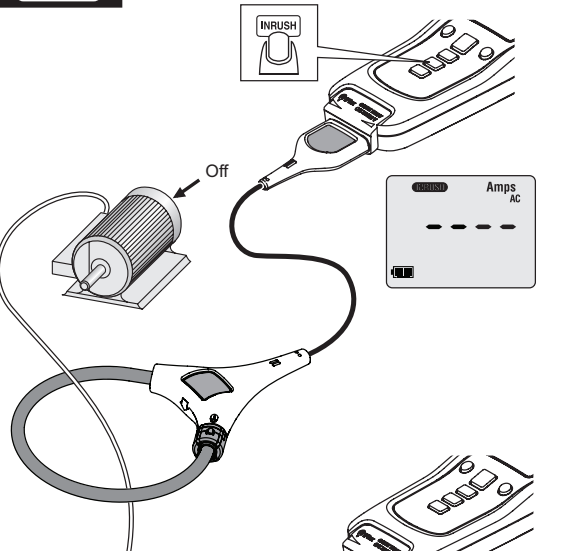


1 OFF	2 LOG + ①	3 LOG x3	4 LoFF
5 ⊙	6 Amps _{AC} 9.8 ∞	7 ⊙	8 Amps _{AC} 9.8 ∞

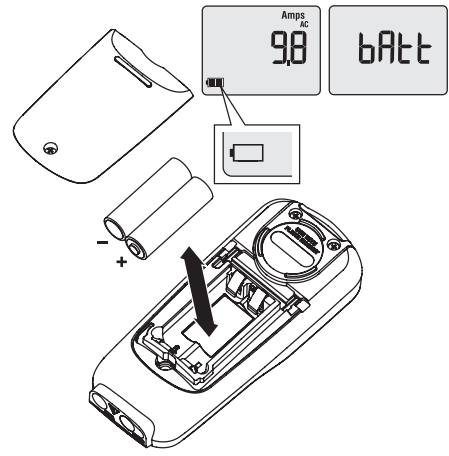
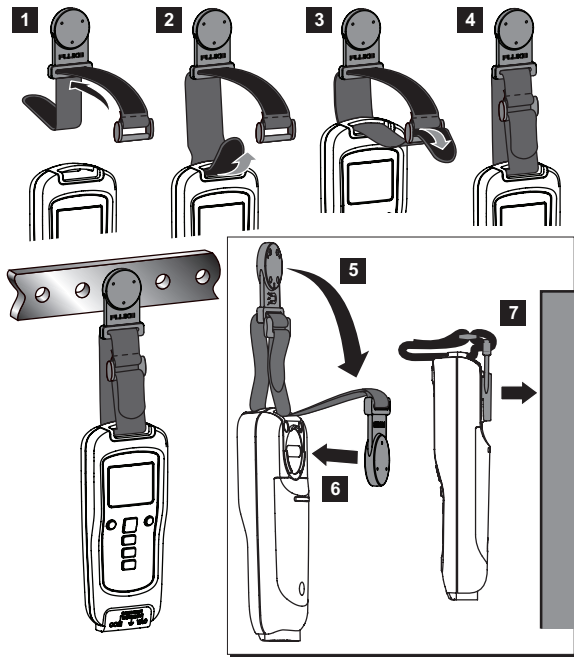
Hz / Amps



INRUSH



ToolPak



LOG

