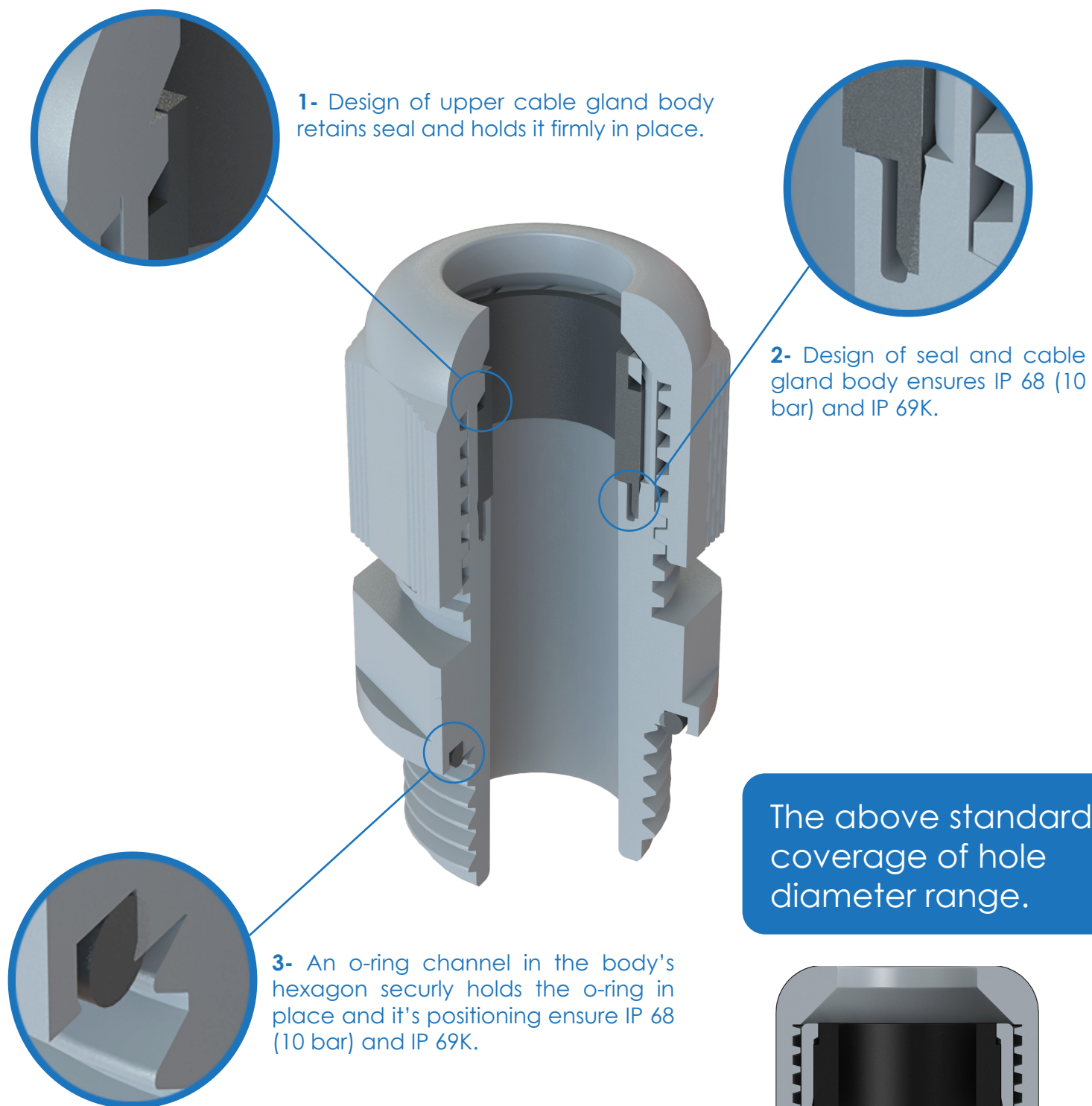
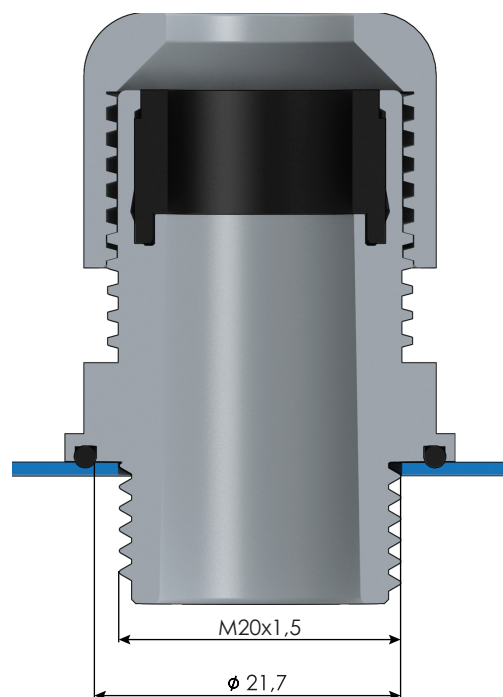


# Features of Bimed High Performance Cable Glands



The above standard coverage of hole diameter range.

For example; the diameter of the M20 enclosure hole is between 20,2 mm – 20,4 mm and an enclosure hole diameter for PG 13,5 thread is between 20,4 mm – 20,6 mm. M20 standard glands only cover M20 enclosure holes whereas BHP M20 gland cover appx. 21,7 mm enclosure hole thanks to the special o-ring channel. Consequently, drilling mistakes can be easily tolerated by BHP Gland.



**bimed**

trademark for innovation and quality



# High Performance Glands with Thread, Polyamide

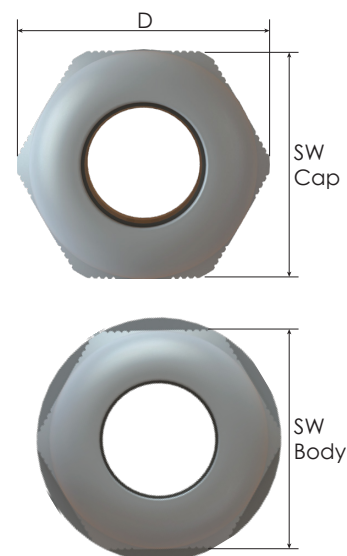
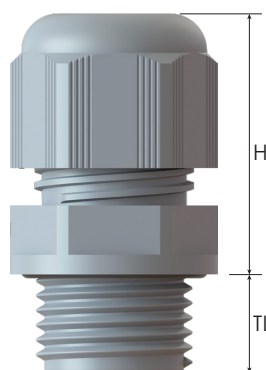
## Polyamide high performance cable glands with lamellar clamping

- For standard industrial applications that require high performance.
- Unique o-ring channel design.
- Easy assembly.
- High quality strain relief and sealing, reliable performance for standard industrial applications.
- Up-to-date international approvals.

### Technical Details

Material	Body	PA 6 (Polyamide 6)	
	Cap	PA 6 (Polyamide 6)	
	Seal	CR (Chloroprene)	
	O-Ring	CR (Chloroprene)	
Protection Class		IP 68 (10 bar), 30 min	
		IP 69	
		IP 66	
Flammability		V0 according to UL94	
Operating Temperature		Permanent	Intermittent
		-40 °C to +100 °C	-60 °C to +150 °C
Thread Type		• Metric EN 60423	
Cable Type		Non armoured	
Accessories		• Lock nut	
		• Dome plug	
		• Multihole seals are also available upon request.	
		• Manufactured according to DIN EN 62444/50262.	
Remarks			

Certification Body	Certificate Number	Standards
	134171	DIN EN 62444
	E199260	UL 514B UL 746C CSA C22.2 No. 18.3-12
<b>TYPE 4x</b>		UL 50E CSA C22.2 No. 94.2-15



### Thread Type **METRIC** acc. to EN 60423

Outer Thread Size (Male)	Clamping Range Ø min-max mm	Outer Thread Length TL mm	Spanner Width		Outer Ø D mm	max. Height H mm	Part Number			Minimum Order Quantity
			Cap SW Cap mm	Body SW Body mm			RAL 7035 Light grey	RAL 7001 grey	RAL 9005 black	
M16x1,5	5,0 - 10,0	10,0	19	19	21,0	28,0	BHPM-11	BHPM-01	BHPM-21	1000
M20x1,5	7,0 - 13,0	10,0	25	25	27,5	31,3	BHPM-12	BHPM-02	BHPM-22	1000
M25x1,5	11,0 - 17,0	10,0	29	29	31,5	35,5	BHPM-13	BHPM-03	BHPM-23	1000
M32x1,5	15,0 - 21,0	10,0	36	36	39,8	39,8	BHPM-14	BHPM-04	BHPM-24	1000