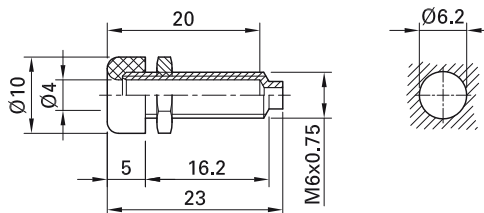


## Panel-mount socket LB4-R/I

Insulated, Ø 4 mm, rigid. Machined brass.  
The socket can be screw-mounted in pre-drilled panels.

**Solder connection.**



Order No.	Type	Rated voltage/current		*Standard colors
49.7068-*	LB4-R/I	30 VAC / 20 A 60 VDC / 20 A	Ni	21 22

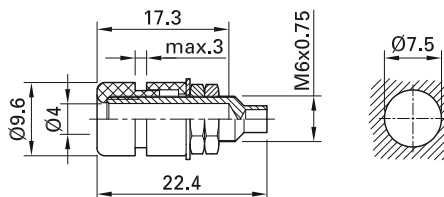
### Component parts

49.7090-*	BI-LB4-R/I	Socket without nut
Page 166	MUE/M6x0,75	Hexagonal Nuts

## Panel-mount socket EBI-40

Insulated, Ø 4 mm, rigid. Machined brass.  
The socket can be screw-mounted in pre-drilled panels.

**Threaded bolt M6x0.75 and solder connection.**



Order No.	Type	Rated voltage/current		*Standard colors
69.8321-*	EBI-40	30 VAC / 20 A 60 VDC / 20 A	Ni	21 22 23



Optional colors 24 25 29

Further information, page 6