

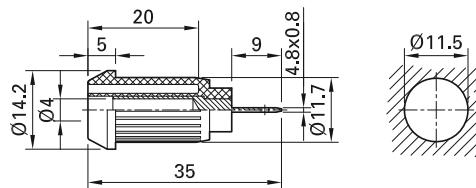
Press-in socket XEP-...

Insulated, rigid, Ø 4 mm, accepting spring-loaded Ø 4 mm plugs with rigid insulating sleeve. The socket is pressed into

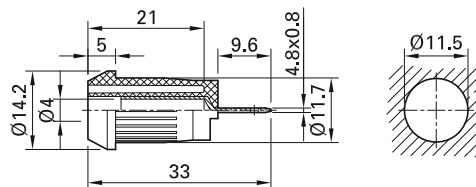
pre-drilled panels of plastic, metal, etc.

Various metal parts/connections.

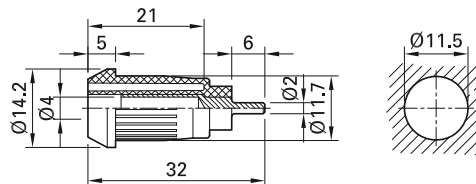
XEP-F



XEP-FS



XEP-S



Order No.	Type	Rated voltage/current	Connection		*Standard colors
66.9682-*	XEP-F	1000 V, CAT III / 20 A	Machined brass/Flat connecting tab 4.8 mm × 0.8 mm	Ni C RU us	21 22 24
66.9685-*	XEP-FS	1000 V, CAT III / 20 A	Brass sheet, rolled/Flat connecting tab 4.8 mm × 0.8 mm	Ni C RU us	21 22
66.9681-*	XEP-S	1000 V, CAT III / 20 A	Machined brass/Solder pin Ø 2.0 mm	Ni C RU us	21 22



Optional colors 20 23 24 25 26 27 29

Further information, page 6



Flat connecting receptacles FSH4,8x0,8, page 170

Press-in tool MB4-S, page 171



Assembly instructions MAH505

www.staubli.com/electrical