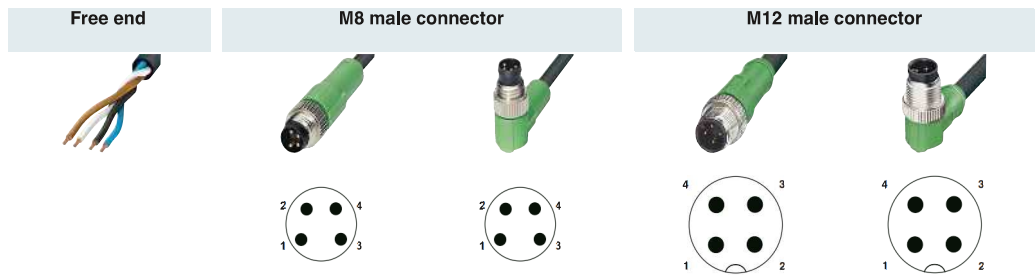


Sensor/actuator cabling

Assembled cables

M8 and M12 SAC cable, 4-pos., cable type: PUR

Notes:
For information about the cable qualities, see page 318



Free end	Ordering data		Ordering data		Ordering data		Ordering data		Ordering data	
	Order No.		Order No.		Order No.		Order No.		Order No.	
		1.5 m	1681787	1.5 m	1681813	1.5 m	1668043	1.5 m	1668166	
		3 m	1681790	3 m	1681826	3 m	1668056	3 m	1668179	
		5 m	1681800	5 m	1681839	5 m	1668069	5 m	1668182	
		10 m	1694143	10 m	1694156	10 m	1682993	10 m	1694457	
		Variable	1697755	Variable	1697768	Variable	1696947	Variable	1696950	
M8 female connector, straight		1.5 m	1681842	0.3 m	1682142	0.3 m	1682223	0.3 m	1694923	
		3 m	1681855	0.6 m	1682155	0.6 m	1682236	0.6 m	1693076	
		5 m	1681868	1.5 m	1682168	1.5 m	1682249	1.5 m	1693089	
		10 m	1683484	3 m	1682171	3 m	1682252	3 m	1694936	
		Variable	1697771	Variable	1697797	Variable	1697810	Variable	1697072	Variable
										1507874
M8 female connector, angled		1.5 m	1681871	0.3 m	1682184	0.3 m	1682265			0.3 m
		3 m	1681884	0.6 m	1682197	0.6 m	1682278			0.6 m
		5 m	1681897	1.5 m	1682207	1.5 m	1682281			1.5 m
		10 m	1694172	3 m	1682210	3 m	1682294			3 m
		Variable	1697784	Variable	1697807	Variable	1697823	Variable	1697085	
										1671551
										1671564
										1671577
										1671580
M8 female connector, angled, with 2 LEDs		Variable	1517673					Variable	1515031	
M12 female connector, straight		1.5 m	1668108					0.3 m	1668357	0.3 m
		3 m	1668111					0.6 m	1668360	0.6 m
		5 m	1668124					1.5 m	1668373	1.5 m
		10 m	1683002					3 m	1668386	3 m
		Variable	1696963	Variable	1506697			Variable	1697001	Variable
										1697030
M12 female connector, straight, with 2 LEDs		1.5 m	1694800							
		3 m	1694813							
		5 m	1694826							
		10 m	1694839							
		Variable	1696976							
M12 female connector, angled		1.5 m	1668221					0.3 m	1668470	0.3 m
		3 m	1668234					0.6 m	1668483	0.6 m
		5 m	1668247					1.5 m	1668496	1.5 m
		10 m	1681389					3 m	1668506	3 m
		Variable	1696989	Variable	1511718	Variable	1697836	Variable	1697014	Variable
										1697043
M12 female connector, angled, with 3 LEDs		1.5 m	1668289					0.3 m	1668519	0.3 m
		3 m	1668292					0.6 m	1668522	0.6 m
		5 m	1668302					1.5 m	1668535	1.5 m
		10 m	1681020					3 m	1668548	3 m
		Variable	1696992					Variable	1697027	Variable
										1697056

Information for products with fixed cable length:

Products with fixed cable length are produced with the halogen-free PUR cable type and are available from stock.

Ordering data for products with variable cable:

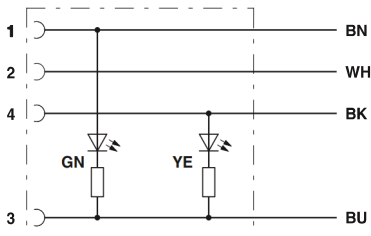
For a 4.5 m long sensor/actuator cable, PUR, halogen-free, black, with a straight 4-pos. M12 male and a straight M12 female, the ordering data is as follows:

Order No.	Cable type	Length [m]
1697001	PUR	4.5
Minimum order amount:		Increments:
25 pcs.		0.2 ... 3 m = 0.1 m
		> 3 m = 0.5 m

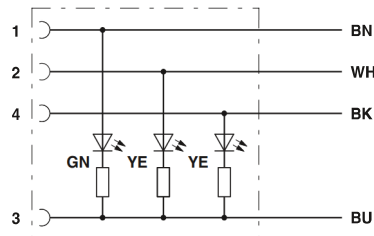
Cable description	Cable type	Suitable for:	Color coding	Pin assignment
PUR, halogen-free – black E221474	PUR	M8/M12	BN WH	1 2
PUR, halogen-free – yellow E221474	240	M12	BK BU	4 3
PUR, halogen-free – gray E221474	280	M8/M12		
TPE-U highly flexible – gray E221474	800	M8/M12		
PUR irradiated – orange E221474	150	M12		
PUR irradiated – yellow E221474	160	M12		
PVC – black E221474	PVC	M8/M12		
PVC – gray E221474	500	M8/M12		
PVC – yellow E221474	540	M12		
PVC 105° – yellow E221474	542	M12		

With a combination of M12 and M8 connectors, the limiting M8 value applies to the rated voltage.

	Technical data	Technical data	Technical data	Technical data
	M8 4-pos.	M8 4-pos., with LED	M12 4-pos.	M12 4-pos., with LED
Rated voltage	48 V AC / 60 V DC	24 V / 24 V DC	250 V AC / 250 V DC	24 V / 24 V DC
Rated current [A]	4	4	4	4
Contact material	CuSn	CuSn	CuSn	CuSn
Contact surface material	Ni/Au	Ni/Au	Ni/Au	Ni/Au
Material of grip body	TPU, hardly inflammable, self-extinguishing	TPU, hardly inflammable, self-extinguishing	TPU, hardly inflammable, self-extinguishing	TPU, hardly inflammable, self-extinguishing
M8 circular connector in accordance with:	IEC 61076-2-104	IEC 61076-2-104	-	-
M12 circular connector in accordance with:	-	-	IEC 61076-2-101	IEC 61076-2-101
Degree of protection	IP65 / IP67 / IP68	IP65 / IP67 / IP68	IP65 / IP67 / IP68	IP65 / IP67 / IP68
Temperature data				
Male connector/female connector [°C]	-25 ... 90	-25 ... 90	-25 ... 90	-25 ... 90



Contact assignment of M8/M12 female connectors with LED



Contact assignment of M12 female connectors with LED