



QUICK START EN 800 A - 3200 A

ATyS / ATyS r

Motorised Source Changeover Switch

Preliminary operations

Check the following upon delivery and after removal of the packaging:

- Packaging and contents are in good condition.
- The product reference corresponds to the order.
- Contents should include:
 - Qty 1 x ATyS / ATyS r
 - Qty 1 x Emergency handle and fixing clip
 - Quick Start instruction sheet

Warning

⚠ Risk of electrocution, burns or injury to persons and / or damage to equipment.
This Quick Start is intended for personnel trained in the installation and commissioning of this product. For further details refer to the product instruction manual available on the SOCOMEC website.

- This product must always be installed and commissioned by qualified and approved personnel.
- Maintenance and servicing operations should be performed by trained and authorised personnel.
- Do not handle any control or power cables connected to the product when voltage may be, or may become present on the product, directly through the mains or indirectly through external circuits.
- Always use an appropriate voltage detection device to confirm the absence of voltage.
- Ensure that no metal objects are allowed to fall in the cabinet (risk of electrical arcing).

- For 800 - 3200 A (U_{imp} = 12 kV). Terminations must respect a minimum of 14 mm clearance from live parts to parts intended to be earthed and between poles.

Failure to observe good engineering practises as well as to follow these safety instructions may expose the user and others to serious injury or death.

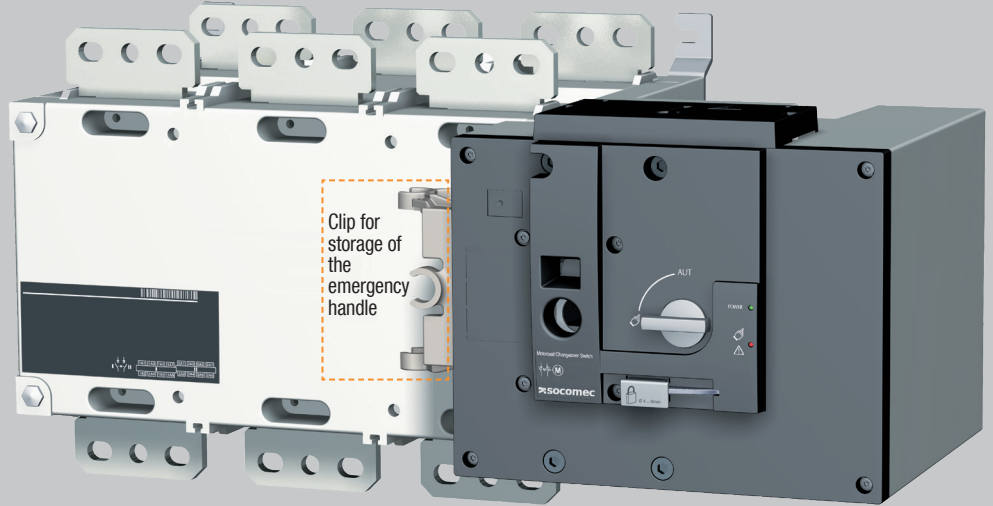
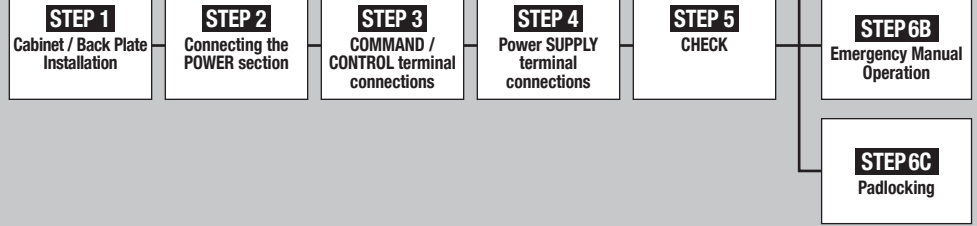
⚠ Risk of damaging the device
In case the product is dropped or damaged in any way it is recommended to replace the complete product.

Accessories

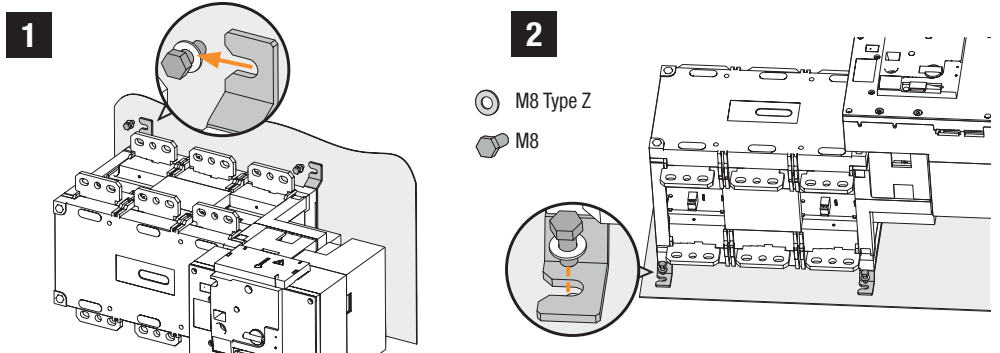
- Bridging bars and connection kits.
- Control voltage transformer (400 VAC → 230 VAC).
- DC power supply (12/24 VDC → 230 VAC).
- Phase barriers.
- Terminal shrouds.
- Terminal screens.
- Auxiliary contacts (Additional).
- Padlocking in 3 positions (I - 0 - II).
- Lockout accessories (RONIS - EL 11 AP).
- Door escutcheon frame.
- ATS controller ATyS C25.
- ATS controller ATyS C55 or C65.

For further details refer to the product instruction manual under chapter "Spares and Accessories"

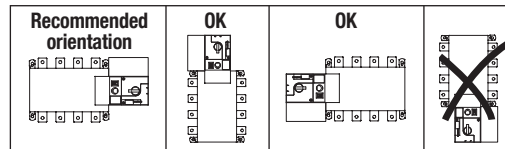
Installation and Commissioning



STEP 1 Installation



⚠ Caution: ensure that the product is installed on a flat rigid surface.



STEP 2 Power Terminal Connections

To be connected using terminal lugs, rigid or flexible busbars.

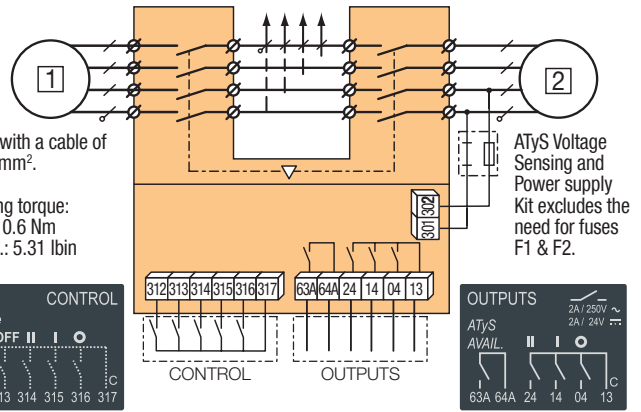
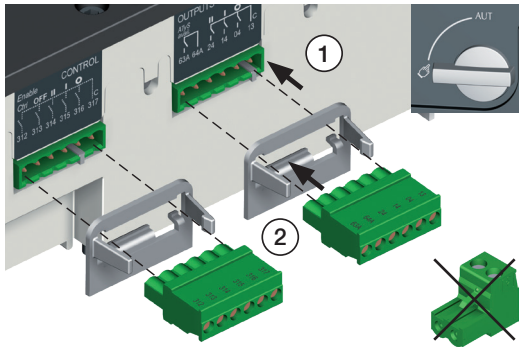
| | FRAME B6 | | | FRAME B7 | | FRAME B8 | |
|---|-----------|-----------|-----------|-----------|-----------|-----------|-----------|
| | 800 A | 1000 A | 1250 A | 1600 A | 2000 A | 2500 A | 3200 A |
| Minimum cable section Cu (mm ²) | 2x185 | - | - | - | - | - | - |
| Recommended cable section Cu (mm ²) | 2x50x5 | 2x63x5 | 2x63x7 | 2x100x5 | 3x100x5 | 2x100x10 | 3x100x10 |
| Maximum Cu cable cross-section (mm ²) | 4x185 | 4x185 | 4x185 | 6x185 | - | - | - |
| Maximum Cu busbar width (mm) | 63 | 63 | 63 | 100 | 100 | 100 | 100 |
| Type of screw | M8 | M8 | M10 | M12 | M12 | M12 | M12 |
| Recommended tightening torque (lb.in/N.m) | 73.46/8.3 | 73.46/8.3 | 177.02/20 | 354.04/40 | 354.04/40 | 354.04/40 | 354.04/40 |
| Maximum tightening torque (lb.in/N.m) | 115.06/13 | 115.06/13 | 230.13/26 | 398.30/45 | 398.30/45 | 398.30/45 | 398.30/45 |



www.socomec.com
To download, brochures, catalogues and technical manuals:
https://www.socomec.com/operating-instructions_en.html

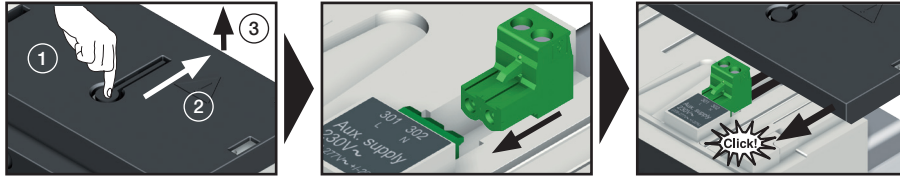
STEP 3 CONTROL / COMMAND Terminals

Ensure that the product is in Manual Mode.



STEP 4 Power Supply Terminal

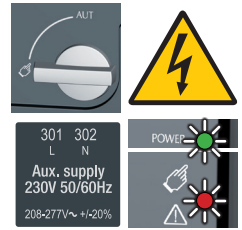
Remove the Top cover to access and connect the terminal - Replace the cover before putting in service.



STEP 5 Check

Whilst in manual mode, check the wiring and if ok power up the product.

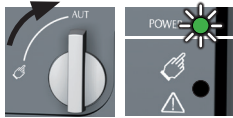
LED "Power" Green: ON
LED Manual/Default Red (Product not Available): ON



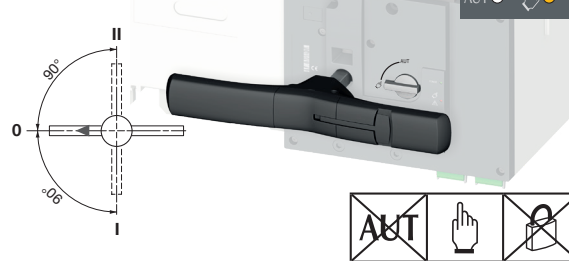
STEP 6A Automatic Operation

Ensure that the emergency handle is not inserted in the product and turn the mode selector to the AUT position.

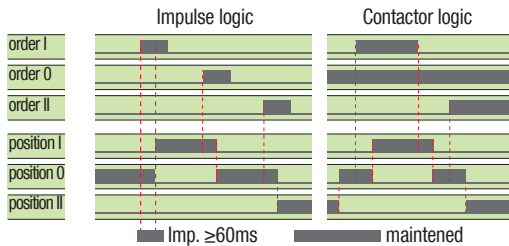
LED "Power" Green: ON
LED Manual/Default: OFF



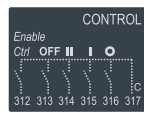
STEP 6B Manual Operation



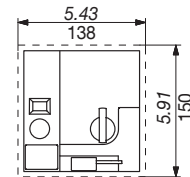
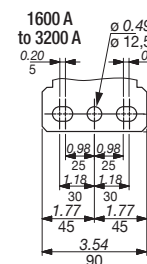
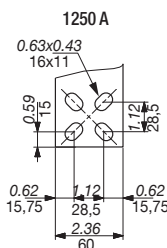
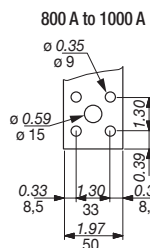
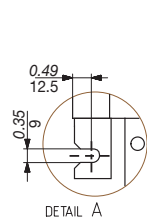
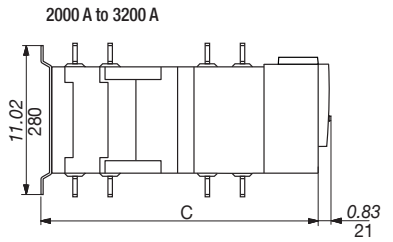
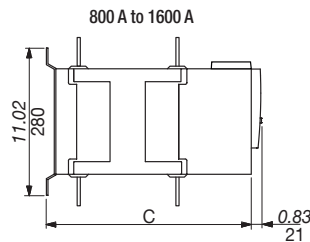
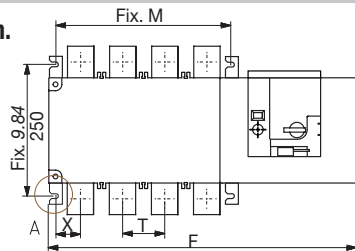
STEP 6C Padlocking Mode (as standard: in position 0)



To enable control, close contact 312 with 317.
To force the product to 0 position/OFF bridge the contact 313 with 317. For contactor logic bridge contact 316 with 317. To operate: close the contact corresponding to the desired position.



Dimensions in./mm.



| | 800 A | | 1000 A | | 1250 A | | 1600 A | | 2000 A | | 2500 A | | 3200 A | |
|----------|-------|------|--------|------|--------|------|--------|------|--------|-------|--------|-------|--------|-------|
| | 3 P | 4 P | 3 P | 4 P | 3 P | 4 P | 3 P | 4 P | 3 P | 4 P | 3 P | 4 P | 3 P | 4 P |
| | in | mm | in | mm | in | mm | in | mm | in | mm | in | mm | in | mm |
| C | 15.39 | 391 | 15.39 | 391 | 15.39 | 391 | 15.39 | 391 | 523 | 20.59 | 523 | 20.59 | 523 | 20.59 |
| F | 19.84 | 504 | 22.99 | 584 | 19.84 | 504 | 22.99 | 584 | 23.46 | 596 | 28.19 | 716 | 23.46 | 596 |
| M | 10.04 | 255 | 13.19 | 335 | 10.04 | 255 | 13.19 | 335 | 13.66 | 347 | 18.39 | 467 | 13.66 | 347 |
| T | 3.15 | 80 | 3.15 | 80 | 3.15 | 80 | 3.15 | 80 | 4.72 | 120 | 4.72 | 120 | 4.72 | 120 |
| X | 1.87 | 47.5 | 1.87 | 47.5 | 1.87 | 47.5 | 1.87 | 47.5 | 2.09 | 53 | 2.09 | 53 | 2.11 | 53.5 |

