

CrossBoard® 800 A

3

CrossBoard®, CRITO® CrossBoard

3-pole



CrossBoard® 800 A, for front feeding

Basic system, touch-safe protected, with CrossLink® interface

Type	Rated current	Width	Height	Pack size	Weight kg/100 u.	PG	Part no. with link
3-pole	800 A	500	200	1	660.0	06	11605
		600		1	792.0	06	11606
		700		1	924.0	06	11607
		800		1	1056.0	06	11608
		900		1	1188.0	06	11609
		1000		1	1320.0	06	11610
		1100		1	1452.0	06	11611



Connection modul for feeding from the front

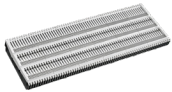
Type	used with	Width	Height	Pack size	Weight kg/100 u.	PG	Part no. with link
connection terminal plate, 3-pole	* 95 - 300 mm ²	170.5	200	1	165.7	07	01013
connection terminal plate, 3-pole	lam. Cu. 20 - 32 x 3 - 15	170.5		1	144.7	07	01014

* see Additional information on aluminium conductor connections Download



CrossBoard®, CRITO® CrossBoard

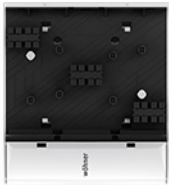
3-pole



CrossBoard® 800 A, for rear feeding

Basic system, touch-safe protected, with CrossLink® interface

Type	Rated current	Width	Height	Pack size	Weight kg/100 u.	PG	Part no. with link
3-pole	800 A	500	200	1	660.0	06	11805
		600		1	792.0	06	11806
		700		1	924.0	06	11807
		800		1	1056.0	06	11808
		900		1	1188.0	06	11809
		1000		1	1320.0	06	11810
		1100		1	1452.0	06	11811



Components for feeding from behind

article	Type	Connection	Pack size	Weight kg/100 u.	PG	Part no. with link
connection module 500 A	prism terminal 300 mm ²	connection top or bottom	1	700.0	07	01066
connection module 800 A	screw connection M12		1	650.0	07	01065
fastening module		no electrical connection	1	23.8	07	01067

At least 2 modules must be installed

Crito® CrossBoard - Connection technology

3-pole



Connection module, 3-pole

to be plugged onto all CrossBoards®

Type	Rated current	Width	Height	Pack size	Weight kg/100 u.	PG	Part no. with link
with integrated spring terminals 1.5 - 16 mm ² , AWG 14 - 6	63 A	22.5	160	1	21.5	07	01592
with box terminals 6 - 50 mm ² / AWG 10 - AWG 1	* 125 A	45		1	31.7	07	01593

* can be used as centre feed of two CrossBoards

Accessories for terminal compartment

Type	used with	Width	Height	Pack size	Weight kg/100 u.	PG	Part no. with link
touch protection cover IP20	for connection module 01593	41	15	4	0.1	07	01604

EQUES® CrossBoard - Adapters 16 A - 63 A

1-pole, 3-pole



Adapters and component supports, 1-pole

for MCBs

Type	Rated current	Width	Height	Pack size	Weight kg/100 u.	PG	Part no. with link
phase L1, 1 fixed mounting rail, with leads AWG 14 (2.5 mm ²)	16 A	18	160	6	6.0	05	32300
phase L2, 1 fixed mounting rail, with leads AWG 14 (2.5 mm ²)	16 A			6	6.0	05	32301
phase L3, 1 fixed mounting rail, with leads AWG 14 (2.5 mm ²)	16 A			6	6.0	05	32302
phase L1, 1 fixed mounting rail, with leads AWG 8 (10 mm ²)	63 A			6	8.3	05	32307
phase L2, 1 fixed mounting rail, with leads AWG 8 (10 mm ²)	63 A			6	8.3	05	32308
phase L3, 1 fixed mounting rail, with leads AWG 8 (10 mm ²)	63 A			6	8.3	05	32309
without electrical connection, 1 fixed mounting rail				6	5.0	05	32311



Adapters with fuse-carrier, 3-pole

with leads AWG 14 (2,5 mm²)

Type	Rated current	Width	Height	Pack size	Weight kg/100 u.	PG	Part no. with link
1 fixed mounting rail, with fuse-carrier 10x38 / Class CC	16 A	22.5	160	1	12.9	05	36009

Fuse links not included

EQUES® CrossBoard - Adapters 16 A - 160 A

3-pole



Adapter and component support

comfort version

Type	Rated current	Width	Height	Pack size	Weight kg/100 u.	PG	Part no. with link
1 adjustable mounting rail, with leads AWG 14 (2.5 mm ²)	16 A	45	160	1	14.0	05	32668
1 adjustable mounting rail, with leads AWG 14 (2.5 mm ²) 160 mm long, for devices with spring terminal technology				1	15.2	05	32669
1 adjustable mounting rail, with leads AWG 12 (4 mm ²)	25 A			1	15.5	05	32676
1 adjustable mounting rail, with leads AWG 10 (6 mm ²)	32 A			1	15.6	05	32684
1 adjustable mounting rail, with leads AWG 10 (6 mm ²) 160 mm long, for devices with spring terminal technology		1	18.5	05	32686		
1 adjustable mounting rail, with leads AWG 8 (10 mm ²)		1	18.0	05	32692		
without electrical connection, 1 adjustable mounting rail				9	9.9	05	32665

Accessories

for adapters comfort version

Type	Pack size	Weight kg/100 u.	PG	Part no. with link
extension module for direct starters	8	2.2	05	32933
extension set for reversing starters	4	7.3	05	32934
mounting rail 54 mm	10	1.5	05	32940
mounting rail 45 mm	10	1.4	05	32947
positioning piece for Siemens S00 and S0	10	1.7	05	32952
positioning piece for Eaton PKZ	10	1.2	05	32979



Adapters 160 A

for circuit breakers

Type	Rated current	Width	Height	Pack size	Weight kg/100 u.	PG	Part no. with link
ABB Tmax XT1, Allen-Bradley 140G-G, Siemens 3VA10, 3VA11, 3VA51, Eaton PDG1	160 A	90	160	1	56.6	05	32690
ABB Tmax XT2, Allen-Bradley 140G-H, Eaton NZM1, Schneider Electric ComPacT NSXm EverLink				1	40.0	05	32691



CrossMT - Measuring module, BROOME - Power supply

3-pole



Measuring module 100 A

for measurement and monitoring of electrical values

Type	Rated current	Pack size	Weight kg/100 u.	PG	Part no. with link
with IO-Link interface, with status LEDs	100 A	1	20.5	23	36400



Feature-Upgrades for measuring module

additional software to expand the range of functions

Type	PG	Part no. with link
Feature upgrade measurement+	24	21020
Feature upgrade energy counter	24	21021
Feature upgrade motor management	24	21022



BROOME10, BROOME20 power supply

Type	Output current	Width	Height	Pack size	Weight kg/100 u.	PG	Part no. with link
400 V AC / 24 V DC, with push-in terminals	10 A	45	160	1	71.8	21	36200
380 - 500 V AC / 24 V DC, with push-in terminals	20 A	49.5	160	1	75.0	21	36203



SECUR®CrossBoard - QUADRON®CrossBoard - CAPUS®CrossBoard

3-pole



SECUR®CrossBoard Switch-disconnector-fuses according to IEC, 3-pole switching

Type	Fuse monitoring	Rated current	Width	Height	Pack size	Weight kg/100 u.	PG	Part no. with link
for D01 and D02 fuses		35 A	22.5	184	1	33.0	01	31660
	LED				1	33.0	01	31260
for fuses 10x38 IEC 60269-2		32 A			1	33.0	01	31662
	LED				1	33.0	01	31262

Fuse links not included

SECUR®CrossBoard Switch-disconnector-fuses according to UL, 3-pole switching

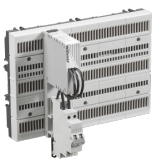
Type	Fuse monitoring	Rated current	Width	Height	Pack size	Weight kg/100 u.	PG	Part no. with link
for fuses Class CC UL 248-4		30 A	22.5	184	1	33.0	01	31664
for fuses Class CC UL 248-4	LED				1	33.0	01	31264

Fuse links not included



QUADRON®CrossBoard fuse-switch-disconnectors, size NH 000 and NH00

Type	Size	Rated current	Width	Height	Pack size	Weight kg/100 u.	PG	Part no. with link
box terminal	NH 000	125 A	49.5	175	1	41.5	09	33800
box terminal	NH 00	160 A	106	200	1	100.0	09	33014
screw M8			106		1	77.7	09	33015



CAPUS®CrossBoard switch-disconnectors with fuses

Type	Rated current	Width	Height	Pack size	Weight kg/100 u.	PG	Part no. with link
for fuses 10x38	16 A	22.5	180	1	17.5	01	36050

Fuse links not included



MOTUS® CrossBoard, MOTUS®C14 CrossBoard - Motor starters



MOTUS®CrossBoard hybrid motor starters

Type	Width	Height	Pack size	Weight kg/100 u.	PG	Part no. with link
electronic unit direct and reversing starter 0.075 - 0.6 A / switch for resistive loads 0.075 - 0.6 A	22.5	160	1	50.9	21	36109
electronic unit direct and reversing starter 0.18 - 2.4 A / switch for resistive loads 0.18 - 2.4 A			1	50.7	21	36110
electronic unit direct and reversing starter 1.5 - 6.5 A / switch for resistive loads 1.5 - 9.0 A			1	51.4	21	36111

MOTUS®CrossBoard hybrid motor starters IO-Link

with IO-Link communication interface

Type	Width	Height	Pack size	Weight kg/100 u.	PG	Part no. with link
electronic unit direct and reversing starter 0.18 - 3.0 A / switch for resistive loads 0.18 - 3.0 A	22.5	160	1	51.4	21	36130
electronic unit direct and reversing starter 1.5 - 7.0 A / switch for resistive loads 1.5 - 9.0 A			1	51.4	21	36131

Replacement fuses

for MOTUS®

Type	Pack size	Weight kg/100 u.	PG	Part no. with link
fuse 16 A for version 0.6 A and 2.4 A	3	2.8	21	31567
fuse 20 A for version 9 A	3	2.8	21	31568
fuse 30 A for version 9 A for motors with heavy-duty starting	3	2.8	21	31569



MOTUS®C14 CrossBoard electronic motor starters

with display and IO-Link communication interface

Type	Width	Height	Pack size	Weight kg/100 u.	PG	Part no. with link
direct and reversing starter 0.1 - 2.6 A	22.5	160	1	51.4	21	36258
direct and reversing starter 0.1 - 6.6 A			1	51.4	21	36262

Feature-Upgrade for MOTUS®

Type	PG	Part no. with link
Feature upgrade softstart	24	21001



OMUS® - Hybrid switches, OMUS®C14 - electronic switches

3-pole



OMUS®CrossBoard hybrid switch for resistive loads

Type	Width	Height	Pack size	Weight kg/100 u.	PG	Part no. with link
electronic unit switch for resistive loads 25.0 A, for applications IEC	36	160	1	55.2	21	36154
electronic unit switch for resistive loads 20.0 A, for applications UL			1	55.2	21	36159

Replacement fuses for OMUS®

Type	Size	Pack size	Weight kg/100 u.	PG	Part no. with link
cylindr. fuse link 32 A	10x38	10	0.6	22	31189
cylindr. fuse link 30 A	Class CC	10	0.8	22	31252



OMUS®C14 CrossBoard electronic switch for resistive loads

with display and IO-Link communication interface

Type	Width	Height	Pack size	Weight kg/100 u.	PG	Part no. with link
electronic unit switch for resistive loads 0.1 to 2.6 A	22.5	160	1	51.4	21	36179
electronic unit switch for resistive loads 0.1 to 6.6 A			1	51.4	21	36183

